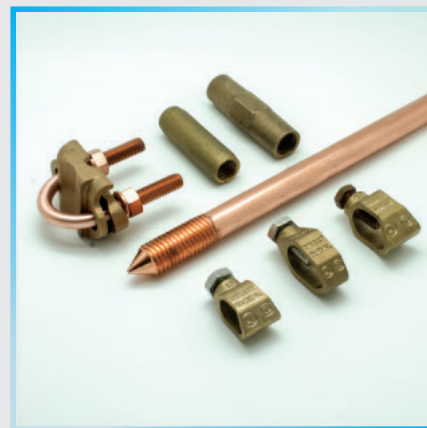




ATL CORPORATION



GROUNDING PRODUCTS





## About Us

Asia Trade Link Corporation (ATL) has a trusted name in electrical connectivity. Our family-owned manufacturing facility in India has been operating for more than six decades and is the largest producer of lugs and terminals in the country, supplying premium-quality products to customers around the globe. Since establishing our U.S. operations in Florida in 2000, we've built a strong reputation as the preferred supplier for distributors and leading OEMs across North America.

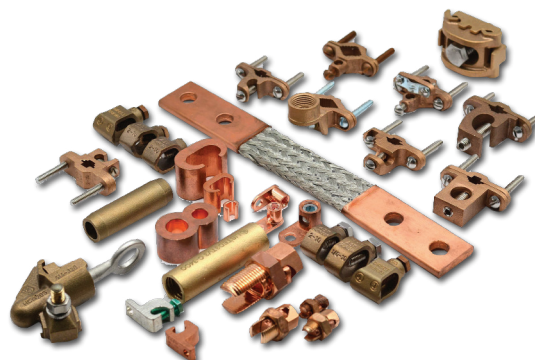
At ATL, we specialize in grounding products, electrical connectors, and custom solutions made from copper, bronze, brass, aluminum, and steel. From casting and forging to stamping and extrusion, our fully integrated facilities give us complete control over quality and delivery — ensuring every product meets or exceeds UL and CSA standards.

Our mission is simple:

Advance the industry with reliable products, exceptional service, and lasting partnerships.

We proudly serve electrical distributors, OEMs, contractors, utilities, automotive suppliers, and renewable energy installers. Our customers know they can count on ATL for consistent quality, competitive pricing, and dependable turnaround times.

With ATL, you get more than just products — you get a partner committed to your success. Pure quality, proven performance, and a connection you can trust.



## Copper Bonded Ground Rod



- ⚡ 254 Micron copper bonding
- ⚡ High conductivity for superior grounding
- ⚡ Steel core for driving strength
- ⚡ Long-lasting, cost-effective solution



### Threaded

Rod Dia Inches	Length Feet	Cat.#
1/2	8	TGR-128
1/2	10	TGR-1210
5/8	8	TGR-588
5/8	10	TGR-5810
3/4	8	TGR-348
3/4	10	TGR3410

### Unthreaded

Rod Dia Inches	Length mm	THREAD Dia.	Cat.#
1/2	2400	9/16"	GR-128
1/2	3000	9/16"	GR-1210
5/8	2400	5/8"	GR-588
5/8	3000	5/8"	GR-5810
3/4	2400	3/4"	GR-348
3/4	3000	3/4"	GR-3410

### Galvanized

Rod Dia Inches	Length Feet	Cat.#
1/2	8	GGR-128
1/2	10	GGR-1210
5/8	8	GGR-588
5/8	10	GGR-5810
3/4	8	GGR-348
3/4	10	GGR3410

## Copper Bonded Coupler (Heavy Duty)



- ⚡ Versatile design fits multiple conductor sizes.
- ⚡ Reduces SKU count on job sites.
- ⚡ Streamlines installation across various rod sizes.
- ⚡ Saves time and improves inventory efficiency.

### Threaded Coupler

Thread Dia	Length mm	Cat.# H
9/16"	70	TGRC916
5/8"	70	TGRC58
3/4"	80	TGRC34

### Compression Coupler

Rod Dia	Length mm	Cat.# H
1/2"	70	CGRC12
5/8"	70	CGRC58
3/4"	80	CGRC34



# GROUNDING

## Ground Rod Clamp (Multipurpose)



- ⚡ Versatile design fits multiple conductor sizes.
- ⚡ Reduces SKU count on job sites.
- ⚡ Streamlines installation across various rod sizes.
- ⚡ Saves time and improves inventory efficiency.

Size	Cable	Bolt Material	Cat #
1/2"	10 SOL	Stainless Steel, 304	GCR13MS
5/8"	-8 SOL		
3/4"	10 STR	Silicon Bronze, 651	GCR13MP

## Ground Rod Clamp (Standard Duty)



- ⚡ Rated for Direct Burial
- ⚡ Designed for demanding high-load grounding.
- ⚡ Corrosion-resistant materials for longevity.
- ⚡ Excellent performance in harsh environments.

Size	Cable	Bolt Material	Cat #
1/2"	10 SOL-6 SOL	Stainless Steel, 304	GCR12ES
		Silicon Bronze, 651	GCR12EP
5/8"	10 SOL-6 SOL	Stainless Steel, 304	GCR58ES
		Silicon Bronze, 651	GCR58EP
3/4"	10 SOL-6 SOL	Stainless Steel, 304	GCR34ES
		Silicon Bronze, 651	GCR34EP

## Ground Rod Clamp (Heavy Duty)



- ⚡ Rated for Direct Burial
- ⚡ Designed for demanding high-load grounding.
- ⚡ Corrosion-resistant materials for longevity.
- ⚡ Excellent performance in harsh environments.

Size	Cable	Bolt Material	Cat #
1/2"	10 SOL-6 SOL	Stainless Steel, 304	GCR12SS
		Silicon Bronze, 651	GCR12SP
5/8"	10 SOL-6 SOL	Stainless Steel, 304	GCR58SS
		Silicon Bronze, 651	GCR58SP
3/4"	10 SOL-6 SOL	Stainless Steel, 304	GCR34SS
		Silicon Bronze, 651	GCR34SP

## Ground Pipe Clamp



- ⚡ Secure grip on unthreaded metal pipe.
- ⚡ Cast Bronze Body – Offers superior corrosion resistance in harsh and moist environments
- ⚡ Simple installation with minimal tools.
- ⚡ Suitable for general-purpose grounding setups.

Size	Wire	Hardware	Cat. #
1/2" TO 1"	10 SOL-6 SOL 10 STR- 2 COMP. STR	Zinc Plated	GP1Z
		Brass	GP1B
		Stainless Steel	GP1S
		Bronze	GP1P
1 1/4" TO 2"	10 SOL-6 SOL 10 STR- 2 COMP. STR	Brass	GP2Z
		Stainless Steel	GP2B
		Zinc Plated Ms	GP2S
		Bronze	GP2P
2 1/2" TO 4"	10 SOL-6 SOL 10 STR- 2 COMP. STR	Zinc Plated Ms	GP4Z
		Brass	GP4B
5" TO 6"	10 SOL-6 SOL 10 STR- 2 COMP. STR	Zinc Plated Ms	GP6Z
		Brass	GP6B

## Ground Pipe Clamp for Threaded Conduit



- ⚡ Engineered to fit rigid threaded conduit.
- ⚡ Provides reliable conduit grounding path.
- ⚡ Solid mechanical bond ensures stability.
- ⚡ Used in commercial/industrial builds.

Conduit Size	Pipe Size	Wire Size	Cat. #
1/2"	1/2" TO 1"	-6 SOL 10STR- 8 COMP.STR	GH112Z
	1 1/4" TO 2"		GH212Z
	2 1/2" TO 4"		GH412Z
	5" TO 6"		GH612Z
3/4"	1/2" TO 1"	-6 SOL 10STR- 8 COMP.STR	GH134Z
	1 1/4" TO 2"		GH234Z
	2 1/2" TO 4"		GH434Z
	5" TO 6"		GH634Z
1"	1/2" TO 1"	-6 SOL 10STR- 8 COMP.STR	GH101Z
	1 1/4" TO 2"		GH201Z
	2 1/2" TO 4"		GH401Z
	5" TO 6"		GH601Z

## Ground Pipe Clamp with Lay-In Facility



- ⚡ Lay-in lug allows fast conductor placement.
- ⚡ No need to cut or break conductor run.
- ⚡ Ideal for retrofit and parallel paths.
- ⚡ Speeds up installation with reduced labor.

Pipe Size	Rebar Size	Ground Rod	Wire Size	Cat#
1/2"-1"	3/8"-1"	1/2"-1"	10 SOL-6 SOL	GLS1S
			10 STR -	GLS1P



# GROUNDING

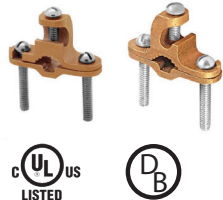
## Ground Pipe Clamp with Lay-In Facility HD



- ⚡ Lay-in lug allows fast conductor placement.
- ⚡ No need to cut or break conductor run.
- ⚡ Ideal for retrofit and parallel paths.
- ⚡ Speeds up installation with reduced labor.

Size			Tape	Cat.#
Size (Pipe)	Rebar	Ground Rod	Wire Size	
1/2"-1"	3/8"-1"	1/2"-1"	10 SOL - 6 SOL 10 STR - 4/0 COMP. Str	GLH1S

## Ground Pipe Clamp with Lay-In



- ⚡ Lay-in lug allows fast conductor placement.
- ⚡ No need to cut or break conductor run.
- ⚡ Ideal for retrofit and parallel paths.
- ⚡ Speeds up installation with reduced labor.

Size (Pipe)	Rebar	Ground Rod	Wire Rod	Hardware	Cat #
1/2"-1"	#4-#6	3/8"-1"	10 SOL-6 SOL 10 STR 2 COMP. Str.	Stainless Steel	GLA1S
				Bronze	GLA1P
1/2"-1"	#4-#6	3/8"-1"	10 SOL-6 SOL 10 STR 2 COMP. Str.	Stainless Steel	GLB1S
				Bronze	GLB1P

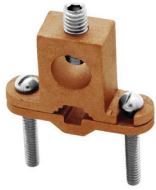
## Ground Clamp for Armored Cable



- ⚡ Integrated saddle supports armored/BX cable.
- ⚡ Firm mechanical and electrical connection.
- ⚡ Quick and code-compliant installation.
- ⚡ Ideal for retrofit or new armored cable runs.

Size	Wire Size	Hardware	Cat#
1/2" TO 1"	10 SOL -6 SOL 10 STR- 2 COMP.Str.	Zinc Plated	GC1Z
		Stainless Steel	GC1S
		Bronze	GC1P
1 1/4" TO 2"	10 SOL -6 SOL 10 STR- 2 COMP.Str.	Zinc Plated	GC2Z
		Stainless Steel	GC2S
		Bronze	GC2P

## Ground Clamp Heavy Duty



- ⚡ Integrated saddle supports armored/BX cable.
- ⚡ Firm mechanical and electrical connection.
- ⚡ Quick and code-compliant installation.
- ⚡ Ideal for retrofit or new armored cable runs.

Size			Tape Wire Size	Cat.#
Size (Pipe)	Rebar	Ground Rod		
1/2"-1"	3/8"-1	1/2"-1"	10 SOL-6	GHR1S
			10 STR-4/0 COMP.ST	GHR1P

## Solderless Offset Mechanical Connector



- ⚡ Offset body suits tight-space installs.
- ⚡ No soldering required for fast bonding.
- ⚡ Ideal for panelboard and enclosure grounding.
- ⚡ Copper construction ensures high conductivity.

Cat #	MIN.	MAX.	STUD HOLE SIZE
COMC10-1	14 AWG	10 AWG	#6
COMC6-1	14 AWG	6 AWG	#10
COMC4-1	14 AWG	4 AWG	1/4
COMC2-1	8 AWG	2 AWG	1/4
COMC1/0-1	6 AWG	1/0 AWG	1/4
COMC3/0-1	4 AWG	3/0 AWG	3/8
COMC4/0-1	2 AWG	4/0 AWG	3/8

## Copper Flat Mechanical Connector



- ⚡ Offset body suits tight-space installs.
- ⚡ No soldering required for fast bonding.
- ⚡ Ideal for panelboard and enclosure grounding.
- ⚡ Copper construction ensures high conductivity.

Cat #	MIN.	MAX.	STUD HOLE SIZE
CFMC10-1	14 AWG	10 AWG	#6
CFMC6-1	14 AWG	6 AWG	#10
CFMC4-1	14 AWG	4 AWG	1/4
CFMC2-1	8 AWG	2 AWG	1/4
CFMC1/0-1	6 AWG	1/0 AWG	1/4
CFMC3/0-1	4 AWG	3/0 AWG	3/8
CFMC4/0-1	2 AWG	4/0 AWG	3/8

## Copper Flat Mechanical Connector Two Hole



- ⚡ Offset body suits tight-space installs.
- ⚡ No soldering required for fast bonding.
- ⚡ Ideal for panelboard and enclosure grounding.
- ⚡ Copper construction ensures high conductivity.

Cat #	MIN.	MAX.	STUD HOLE SIZE
COMC10-2	14 AWG	10 AWG	#6
COMC6-2	14 AWG	6 AWG	#10
COMC4-2	14 AWG	4 AWG	1/4
COMC2-2	8 AWG	2 AWG	1/4
COMC1/0-2	6 AWG	1/0 AWG	1/4
COMC3/0-2	4 AWG	3/0 AWG	3/8
COMC4/0-2	2 AWG	4/0 AWG	3/8
COMC350-2	1/0 AWG	350 MCM	3/8
COMC500-2	1/0 AWG	500 MCM	3/8
COMC1000-2	500 MCM	1000 MCM	1/2



# GROUNDING

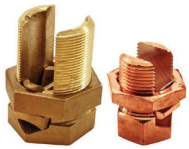
## C-Taps



- ⚡ Seamless copper for high conductivity.
- ⚡ Minimal crimp force needed for secure bond.
- ⚡ Ideal for irreversible ground connections.
- ⚡ Clean and compact profile for easy installs.

Cat.#	Conductor Main	Conductor Tap
CC1010S	12 SOL-10 STR	12 SOL-10 STR
CC0808S	8 SOL-8 STR	10-SOL-8 STR
CC0408S	6 SOL-4 STR	8 SOL -8 STR
CC0406S	6 SOL-4 STR	6 SOL-6 STR
CC0404S	6 SOL-4 STR	4 SOL-4 STR
CC0204S	2 SOL-2 STR	8 SOL-4 STR
CC0202S	2 SOL-2 STR	2 SOL-2 STR
CC2002S	1/0 SOL-2/0 STR	8 SOL-2STR
CC2010S	1/0 SOL-2/0 STR	2/0 STR-1/0 SOL
CC4002S	3/0 SOL-4/0 STR	6 SOL-2 STR
CC4020S	3/0 SOL-4/0 STR	1/0 SOL-2/0 STR
CC4040S	3/0 STR-4/0 STR	3/0 STR -4/0 STR

## Split Bolts



- ⚡ Precision-machined for even pressure distribution.
- ⚡ Copper and bronze options available.
- ⚡ Compact solution for splicing and taps.
- ⚡ Excellent conductivity in tight installations.

Cat #	WIRE RANGE	MIN. WIRE GAUGE
BSB8	16STR-8 STR.	16STR
BSB6	10SOL-6 SOL.	16SOL
BSB4	8SOL-4 SOL.	16SOL
BSB2	6SOL- 2 STR.	12SOL
BSB10	4SOL- 1/0 STR.	14SOL
BSB20	2SOL-2/0 STR.	12SOL
BSB30	2SOL- 3/0 STR.	10SOL
BSB250	1/0SOL-250MCM	8SOL
BSB350	4/0STR - 350MCM	8SOL
BSB500	250- 500MCM	8SOL

## Post Connector



- ⚡ Solid copper body for superior conductivity.
- ⚡ Vertical post allows multiple conductor terminations.
- ⚡ Clean termination point for equipment grounding.
- ⚡ Reliable in switchgear and substation environments.

CAT. NO.	WIRE RANGE		STUD HOLE SIZE
	MIN.	MAX.	
APC-8	14 AWG	8 AWG	#10
APC-4	14 AWG	4 AWG	1/4
APC-10	8 AWG	1/0 AWG	5/16
APC-250	6 AWG	250 AWG	3/8
APC-500	4/0 AWG	500 MCM	1/2
APC-1000	500 MCM	1000 MCM	1/2



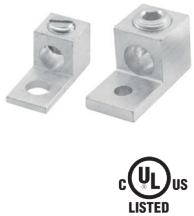
## Copper Lay-in Lug



- ⚡ 99.9% pure high-conductivity copper
- ⚡ Available in multiple wire sizes
- ⚡ Suitable for copper and aluminum conductors.
- ⚡ UL Listed & CSA Certified

Cat #	MIN.	MAX.	STUD HOLE SIZE
CLL-4	14 AWG	4 AWG	#10
CLL-1/0	14 AWG	1/0 AWG	1/4
CLL-3/0	6 AWG	3/0 AWG	5/16
CLL-250	6 AWG	250 MCM	5/16

## Aluminum Mechanical Connector- Single Conductor- Single Hole



- ⚡ Lightweight yet strong aluminum alloy.
- ⚡ Tin-plated for corrosion resistance.
- ⚡ Suitable for copper and aluminum conductors.
- ⚡ Cost-effective solution for power distribution systems.

Cat #	MIN.	MAX.	STUD HOLE SIZE
AMC111-6	14 AWG	6 AWG	1/4
AMC111-4	14 AWG	4 AWG	1/4
AMC111-2	14 AWG	2 AWG	1/4
AMC111-1/0	14 AWG	1/0 AWG	1/4
AMC111-2/0	14 AWG	2/0 AWG	1/4
AMC111-3/0	6 AWG	3/0 AWG	1/4
AMC111-4/0	6 AWG	4/0 AWG	5/16
AMC111-250	6 AWG	250 MCM	5/16
AMC111-300	6 AWG	300 MCM	5/16
AMC111-350	6 AWG	350 MCM	5/16
AMC111-500	4 AWG	500 MCM	3/8
AMC111-600	2 AWG	600 MCM	3/8
AMC111-800	300 MCM	800 MCM	1/2
AMC111-1000	500 MCM	1000 MCM	1/2

## Aluminum Mechanical Connector- Single Conductor- Double Hole



- ⚡ Lightweight yet strong aluminum alloy.
- ⚡ Tin-plated for corrosion resistance.
- ⚡ Suitable for copper and aluminum conductors.
- ⚡ Cost-effective solution for power distribution systems.

Cat #	MIN.	MAX.	STUD HOLE SIZE
AMC121-4/0	6 AWG	4/0 MCM	1/2
AMC121-250	6 AWG	250 MCM	1/2
AMC121-300	6 AWG	300 MCM	1/2
AMC121-350	6 AWG	350 MCM	1/2
AMC121-500	4 AWG	500 MCM	1/2
AMC121-600	2 AWG	600 MCM	1/2
AMC121-800	300 MCM	800 MCM	1/2
AMC121-1000	500 MCM	1000 MCM	1/2

## Aluminum Mechanical Connector- Single Conductor- Double Hole



- ⚡ Lightweight yet strong aluminum alloy.
- ⚡ Tin-plated for corrosion resistance.
- ⚡ Suitable for copper and aluminum conductors.
- ⚡ Cost-effective solution for power distribution systems.

Cat #	MIN.	MAX.	STUD HOLE SIZE
AMC221-300	6 AWG	300 MCM	1/2
AMC221-350	6 AWG	350 MCM	1/2
AMC221-500	4 AWG	500 MCM	1/2
AMC221-600	2 AWG	600 MCM	1/2
AMC221-800	300 MCM	800 MCM	1/2
AMC221-1000	500 MCM	1000 MCM	1/2



# GROUNDING

## Aluminum Mechanical Connector- Double Conductor- Single Hole



- ⚡ Lightweight yet strong aluminum alloy.
- ⚡ Tin-plated for corrosion resistance.
- ⚡ Suitable for copper and aluminum conductors.
- ⚡ Cost-effective solution for power distribution systems.

Cat #	MIN.	MAX.	STUD HOLE SIZE
AMC212-2	14 AWG	2 AWG	1/4
AMC212-2	14 AWG	1/0 AWG	1/4
AMC212-2	14 AWG	2/0 AWG	1/4
AMC212-2	6 AWG	3/0 AWG	1/4
AMC212-2	6 AWG	4/0 AWG	3/8
AMC212-2	6 AWG	250 MCM	3/8
AMC212-2	6 AWG	300 MCM	3/8
AMC212-2	6 AWG	350 MCM	3/8
AMC212-2	4 AWG	500 MCM	1/2
AMC212-2	2 AWG	600 MCM	1/2
AMC212-2	300 MCM	800 MCM	5/8
AMC212-2	500 MCM	1000 MCM	5/8

## Aluminum Mechanical Connector- Double Conductor- Double Hole



- ⚡ Lightweight yet strong aluminum alloy.
- ⚡ Tin-plated for corrosion resistance.
- ⚡ Suitable for copper and aluminum conductors.
- ⚡ Cost-effective solution for power distribution systems.

Cat #	MIN.	MAX.	STUD HOLE SIZE
AMC212-2	14 AWG	2 AWG	1/4
AMC212-2	14 AWG	1/0 AWG	1/4
AMC212-2	14 AWG	2/0 AWG	1/4
AMC212-2	6 AWG	3/0 AWG	1/4
AMC212-2	6 AWG	4/0 AWG	3/8
AMC212-2	6 AWG	250 MCM	3/8
AMC212-2	6 AWG	300 MCM	3/8
AMC212-2	6 AWG	350 MCM	3/8
AMC212-2	4 AWG	500 MCM	1/2
AMC212-2	2 AWG	600 MCM	1/2
AMC212-2	300 MCM	800 MCM	5/8
AMC212-2	500 MCM	1000 MCM	5/8

## Aluminum Mechanical Connector- Double Conductor- Double Hole



- ⚡ Lightweight yet strong aluminum alloy.
- ⚡ Tin-plated for corrosion resistance.
- ⚡ Suitable for copper and aluminum conductors.
- ⚡ Cost-effective solution for power distribution systems.

Cat #	MIN.	MAX.	STUD HOLE SIZE
AMC422-300	6 AWG	300 MCM	1/2
AMC422-350	6 AWG	350 MCM	1/2
AMC422-500	4 AWG	500 MCM	1/2
AMC422-600	2 AWG	600 MCM	1/2
AMC422-800	300 MCM	800 MCM	1/2
AMC422-1000	500 MCM	1000 MCM	1/2

## Hot Line Clamps



⚡ Compatible with distribution service connection with hot stick

⚡ Bronze or Aluminum Alloy cast bodies

⚡ Wide Jaws provide great conductor contact and reduce twisting

⚡ Spring loaded to reduce vibration and temperature changes

Cat #	Run	Tap
AHLC1520S	#8 sol-2/0 str	#8 sol-2/0 str
AHLC1530S	#6 sol-400 MCM	#6 sol-4/0 str
AHLC1540S	4/0 ACSR-800 MCM	#4 sol-350 MCM
AAHLC1520S	#8 sol-2/0 str	#8 sol-2/0 str
AAHLC1530S	#6 sol-400 MCM	#6 sol-4/0 str
AAHLC1540S	4/0 ACSR-800 MCM	#4 sol-350 MCM



ATL CORPORATION



Jupiter, FL 33458, USA | Contact: 1-833-783-ATLC (2852) | +1 (561) 295-5433  
e: [sales@atlcorporation.com](mailto:sales@atlcorporation.com) | [www.ATLCorporation.com](http://www.ATLCorporation.com)